

LEED PROJECT SCORECARD



LEED for Cities and Communities: Plan and Design Project Checklist

Y ? N

Cities Communities

	2	0	3	INTEGRATIVE PROCESS	POSSIBLE: 5	POSSIBLE: 5
Y				Prereq Integrative Planning and Design Process	REQUIRED	REQUIRED
	2		3	Credit Green Building Policy and Incentives	5	5
	11	0	2	NATURAL SYSTEMS AND ECOLOGY	POSSIBLE: 13	POSSIBLE: 13
Y				Prereq Ecosystem Assessment	REQUIRED	REQUIRED
Y				Prereq Construction Activity Pollution Prevention	REQUIRED	REQUIRED
Y				Prereq Green Spaces	REQUIRED	REQUIRED
	3		2	Credit Natural Resources Conservation and Restoration	5	5
	2			Credit Light Pollution Reduction	2	2
	6			Credit Resilience Planning	6	6
	15	0	3	TRANSPORTATION AND LAND USE	POSSIBLE: 18	POSSIBLE: 18
	3		3	Credit Compact, Mixed Use and Transit Oriented Development	6	6
	4			Credit Walkability and Bikeability	4	4
	2			Credit Access to Quality Transit	2	2
	2			Credit Alternative Fuel Vehicles	2	2
	2			Credit Smart Mobility and Transportation Policy	2	2
	2			Credit High Priority Sites	2	2
	7	0	5	WATER EFFICIENCY	POSSIBLE: 12	POSSIBLE: 12
Y				Prereq Integrated Water Management	REQUIRED	REQUIRED
Y				Prereq Water Access and Quality	REQUIRED	REQUIRED
	5			Credit Stormwater Management	5	5
			5	Credit Wastewater Management	5	5
	2			Credit Smart Water Systems	2	2
	29	0	2	ENERGY AND GREENHOUSE GAS EMISSIONS	POSSIBLE: 31	POSSIBLE: 31
Y				Prereq Power Access, Reliability and Resiliency	REQUIRED	REQUIRED
	19			Prereq Energy and Greenhouse Gas Emissions Management	15	19
	2		2	Credit Energy Efficiency	4	4
	6			Credit Renewable Energy	6	6
			N/A	Credit Low Carbon Economy	4	-
	2			Credit Grid Harmonization	2	2

Project Name Hillcrest ("The Heights")
Project ID 1000128167
Date 8/30/2023 - LEED Precertified Platinum

Y ? N

Cities Communities

	7	0	4	MATERIALS AND RESOURCES	POSSIBLE: 11	POSSIBLE: 11
Y				Prereq Construction and Demolition Waste Management	REQUIRED	REQUIRED
Y				Prereq Solid Waste Management	REQUIRED	REQUIRED
	2			Credit Organic Waste Treatment	2	2
	3		2	Credit Recycling Infrastructure	5	5
	2			Credit Responsible Sourcing for Infrastructure	2	2
	2		2	Credit Smart Waste Management Systems	2	2
	8	0	2	QUALITY OF LIFE	POSSIBLE: 10	POSSIBLE: 10
Y				Prereq Demographic Assessment	REQUIRED	REQUIRED
Y				Prereq Social Infrastructure	REQUIRED	REQUIRED
Y				Prereq Economic Growth	REQUIRED	REQUIRED
	2			Credit Affordable Housing	2	2
	4		2	Credit Public Health	6	6
	2			Credit Emergency Management and Response	2	2
	4	0	2	INNOVATION	POSSIBLE: 6	POSSIBLE: 6
	4		2	Credit Innovation	6	6
	4	0	0	REGIONAL PRIORITY	POSSIBLE: 4	POSSIBLE: 4
	4			Credit Regional Priority	4	4

87	0	23	TOTAL	110	110
			40-49	50-59	60-79
			CERTIFIED	SILVER	GOLD
					80+ Points
					PLATINUM

The Heights has been precertified as a LEED Platinum Community!

SUSTAINABILITY GOALS

The following goals were created during the sustainability work group and represent efforts that will be implemented throughout the Heights neighborhood

1 The Heights will be a carbon-free neighborhood

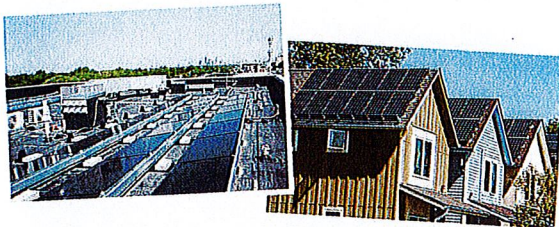
2 The neighborhood will achieve LEED for Communities Platinum certification



3 All buildings will be required to be certified using LEED or Green Communities

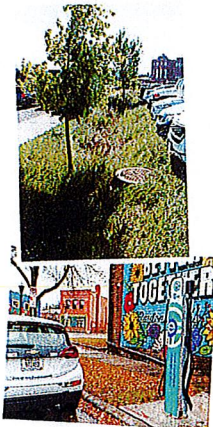
4 Energy efficiency will be prioritized

5 All rooftops will have solar photovoltaic (PV) panels, maximizing on-site solar production



6 Natural gas lines will be eliminated to create an all-electric neighborhood

7 All buildings will participate in a district energy system to serve their heating and cooling needs



8 Green infrastructure-oriented, district stormwater management system will be implemented

9 EV charging stations and EV-ready parking areas will be included within every development parcel to address current and anticipated future needs

10 Mercury contamination will be removed to enable the site to become accessible to the public and future development

11 Wetlands will be restored that require contamination remediation and mitigation following the mercury clean-up efforts



12 Embodied carbon emissions from buildings will be reduced



13 Multi-modal, clean transportation will be supported

14 Healthy landscapes will be encouraged

15 Locally-owned solar installations will be maximized

16 Water will be kept clean and protected

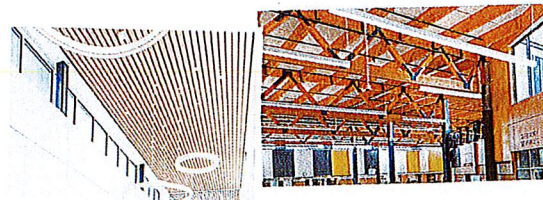
17 Resiliency measures will be included throughout the neighborhood

18 Affordable and ultra-affordable housing options will be provided

19 Green job industries and local jobs will be created

20 High-efficiency, bird-friendly lighting will be utilized

21 Use of exposed wood in buildings will be emphasized



22 Buildings will provide daylight access

23 Make The Heights repeatable and educational

WHAT WE'VE HEARD SO FAR

- We've held xxx work groups over xxx hours across online and inperson sessions, engaging xxx of your neighborhood representatives
- We've held xx open houses & events

Housing Density Options



// Birding, fishing, outdoor rec, macroinvertebrates

// Kiosks that have people of the community to tell about thier stories

// Sensory gardens throughout - music & color & water & light

// Hammock grove!

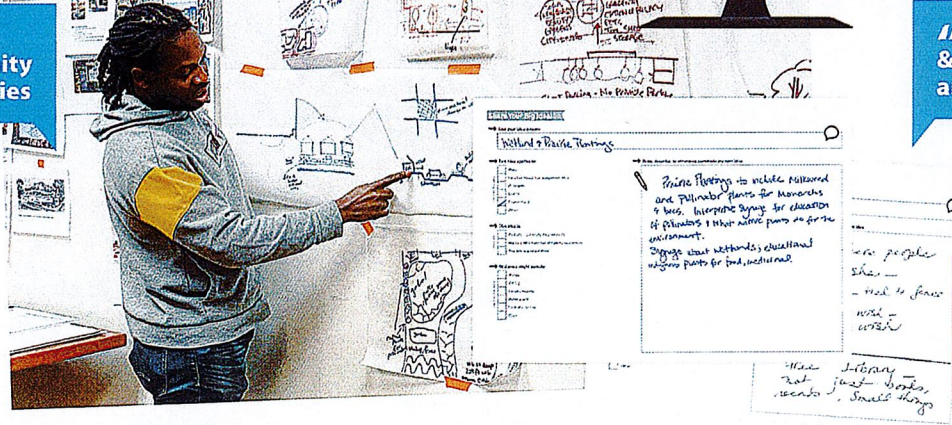
// Stormwater demonstrations

// Boardwalks & interpretive amphitheater outdoors

// Public art on retaining walls

// Town square around neighborhood node

// Nature play by wetlands - reflective of local nature



Community Engagement Timeline

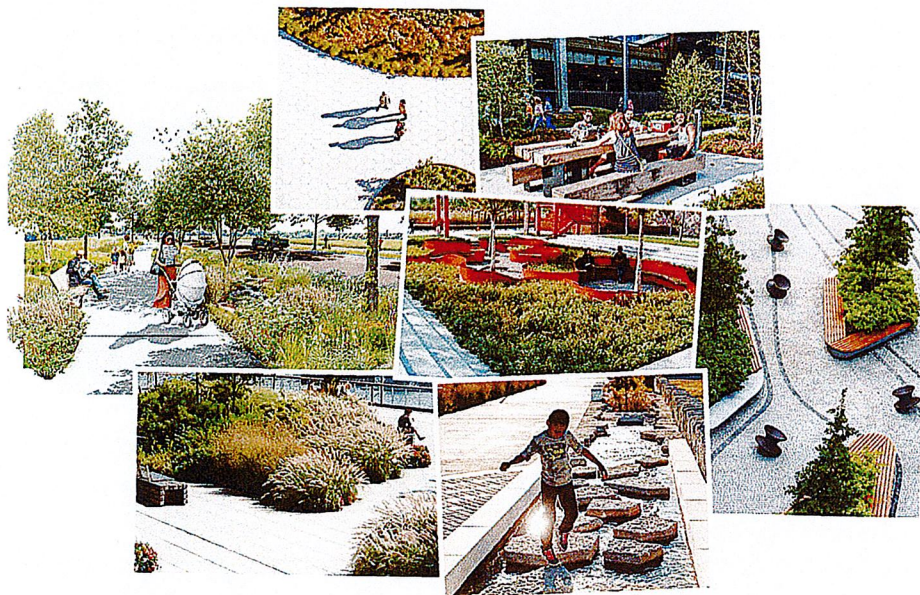


Quotes above were pulled from this workgroup!

we are here

We're here to update you on our design progress within the open spaces of the Heights

OVERALL LANDSCAPE DIRECTION



1 Incorporating Art, Play, & Gathering

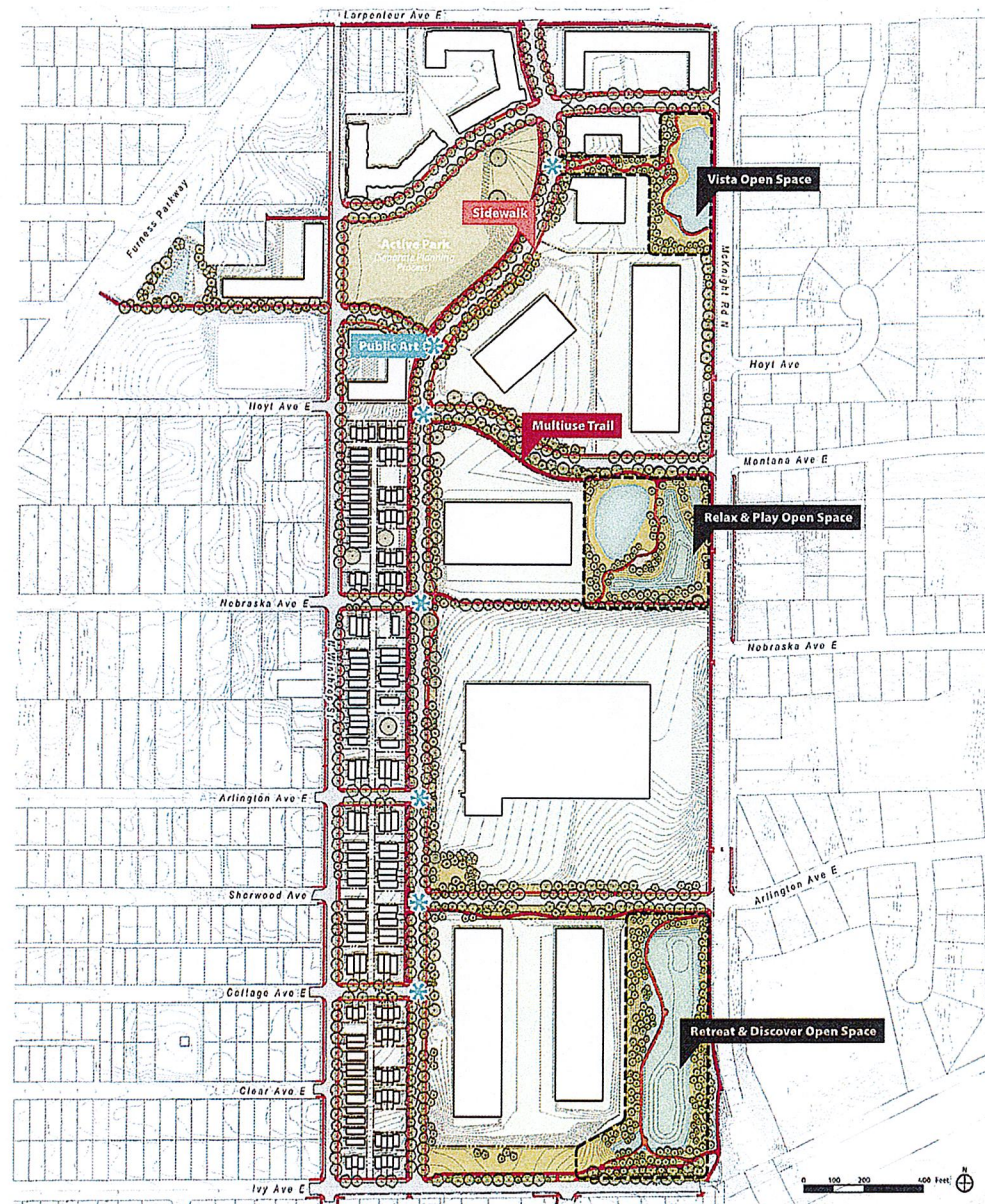
- Playful use of materials, color, form
- Including **interactive** elements
- Curvilinear sidewalks
- **Placemaking**

2 Expressing Sustainability

- Embracing urban wilderness to create habitat
- Reclaimed materials with a modern twist
- Incorporating regenerative design
- Allowing **processes to be seen** (i.e. stormwater)

3 Vegetative Diversity & Seasonality

- Creating a new **urban canopy** with tree plantings
- Including **species diversity** in right of way plantings



RELAX & PLAY OPEN SPACE

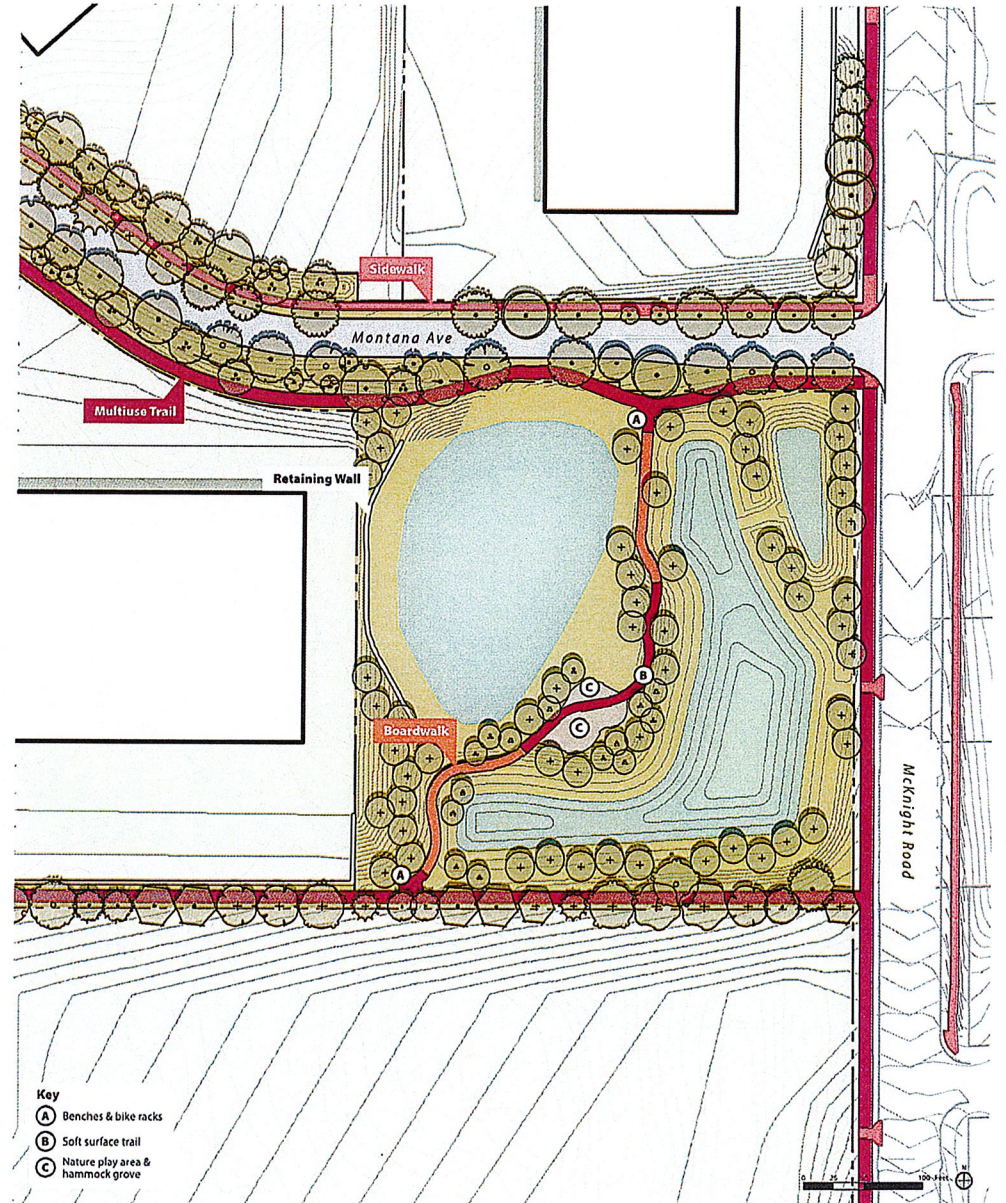
Simple insertions in a naturalized landscape



Reclaimed wood as nature play

Soft surface pathways-informal, more remote feel

Incorporating boulder or soft surfacing into nature play

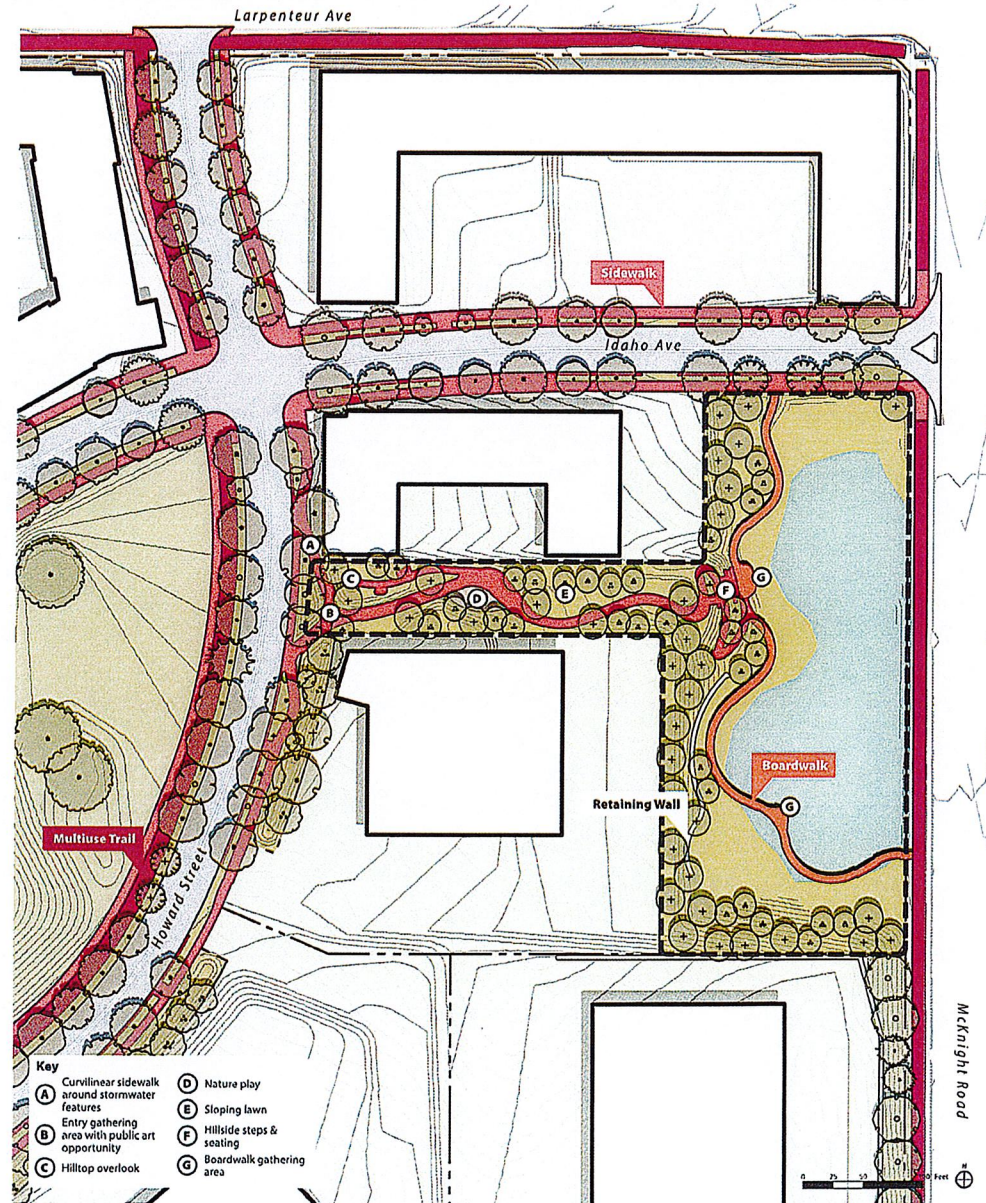
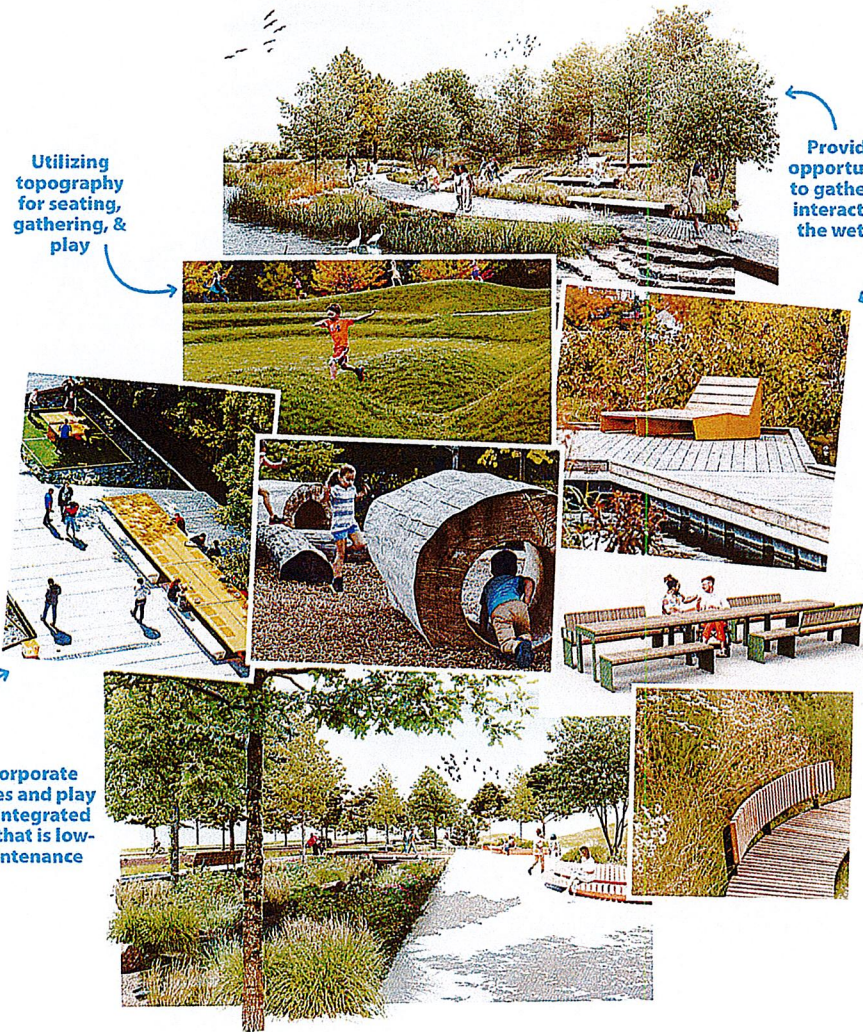


THE VISTA OPEN SPACE

Utilizing topography for seating, gathering, & play

Providing opportunities to gather and interact near the wetland

Incorporate games and play in a way that is low-maintenance



RETREAT & DISCOVER OPEN SPACE

Prospect and refuge, use of the seating doubles as outdoor classroom



Places for Contemplation

Places for Discovery



Continue to emphasize topographic features



Incorporating bird blinds



Integrated public art

