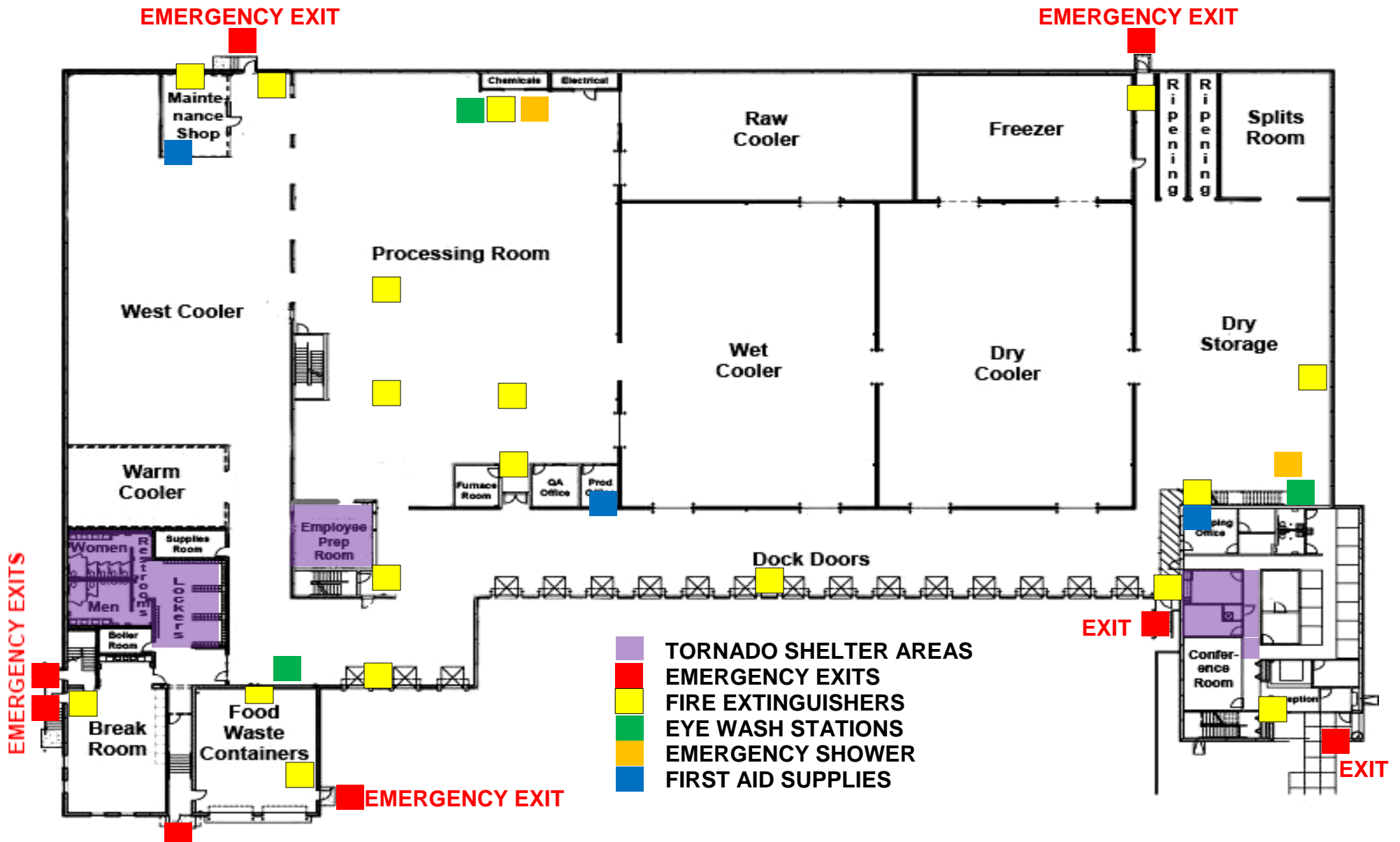


<b>BIX PRODUCE COMPANY</b>	<b>QUALITY SYSTEMS</b>	Document #	Issue #
		P002QA	7
	Emergency Evacuation Map	Issued Date: 4/16/18	
		Issued By: Scott Tedson	
		Reviewed By: Troy Wilcox	



- TORNADO SHELTER AREAS
- EMERGENCY EXITS
- FIRE EXTINGUISHERS
- EYE WASH STATIONS
- EMERGENCY SHOWER
- FIRST AID SUPPLIES

Figure 1- Ground Floor Evacuation Map

<b>BIX PRODUCE COMPANY</b>	<b>QUALITY SYSTEMS</b>	<b>Document #</b>	<b>Issue #</b>
		P002QA	7
	Emergency Evacuation Map	<b>Issued Date:</b> 4/16/18	
		<b>Issued By:</b> Scott Tedson	
		<b>Reviewed By:</b> Troy Wilcox	

## 1. Procedures

- a. Evacuate the building as soon as possible (see CP002SHE). Use the Emergency Evacuation Map for assistance.
- b. In the event of a chemical spill or mixing of chemicals resulting in gas formation, use the closest emergency exit path available. Do not use an emergency exit if you must pass through or near a cloud of gas.
- c. All employees must meet in the southeast corner of the main parking lot or other designated area to be accounted for.
- d. The assigned meeting location should be opposite to the direction that the wind is blowing in case of chemical or fire emergency.

## 2. Responsibilities

- a. Refer to emergency evacuation procedures policy CP002SHE for details.

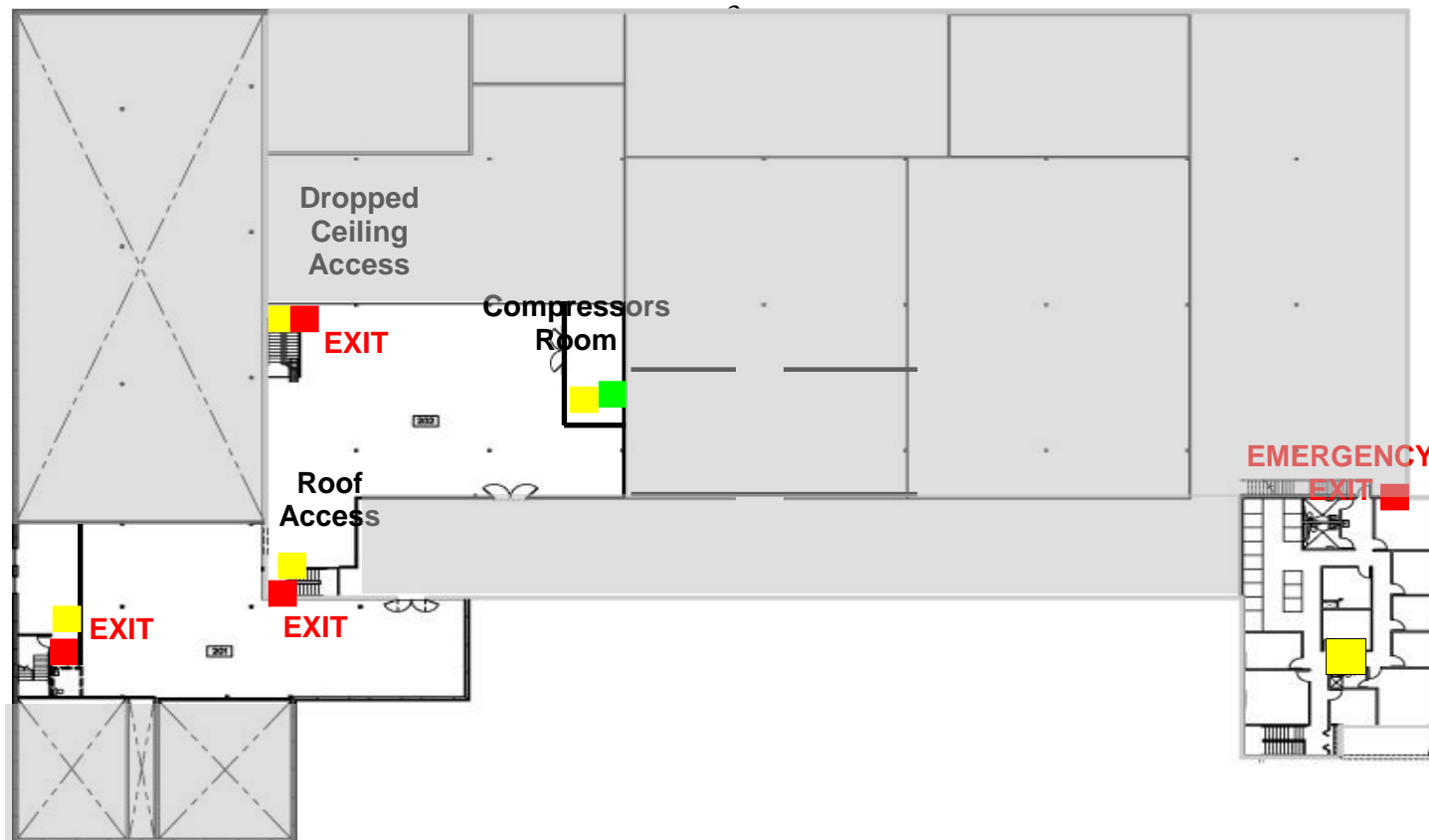


Figure 2: Mezzanine Level Emergency Evacuation Map